

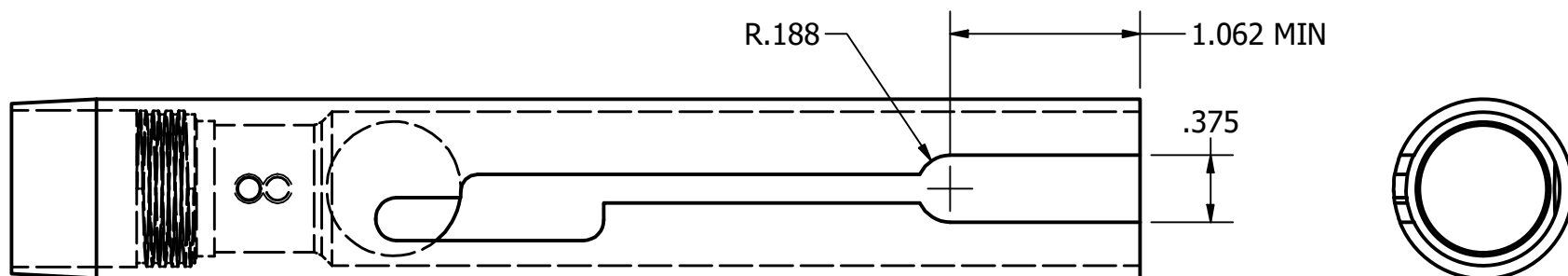
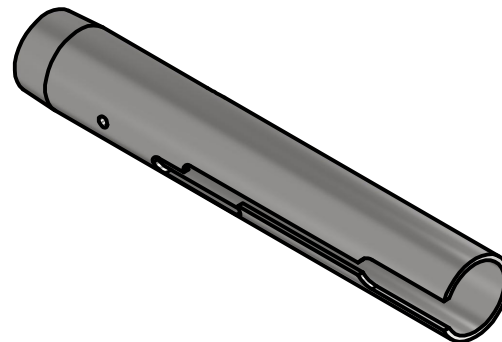
2



1

Required modification for Phrame installation:

- Sear slot at back end of breech must be opened to provide clearance for .350" wide gas boss to insert 1-1/16" from back of breech.
- Maximum Material Condition shown. Additional material can be removed without negatively affecting performance of Phrame.
- Deburr cut edges after machining.
- Slot will be entirely hidden by Phrame assembly if cut as shown.



DRAWN N Wilson	12/15/2024	Phramework Designs LLC		
CHECKED		TITLE		
QA		Phrame Breech Modification		
MFG		SIZE	DWG NO	REV
APPROVED		A	PHA-005	-
		SCALE	SHEET 1 OF 1	
		1 : 1		

2



1